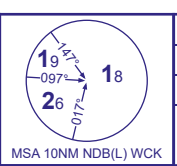
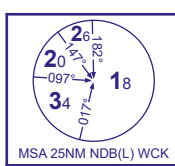


INSTRUMENT APPROACH CHART - ICAO

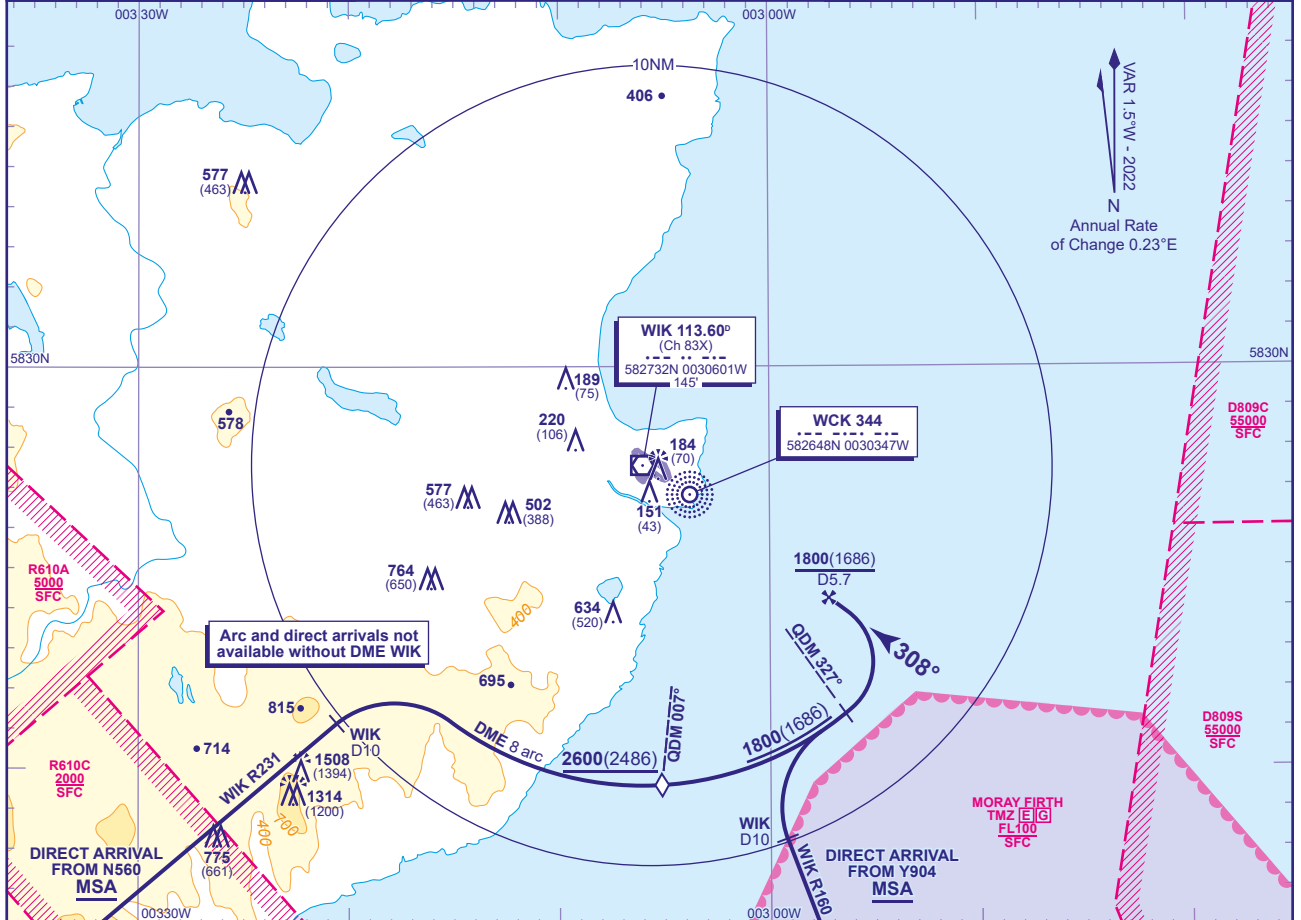
WICK

Direct arrivals
to NDB(L)/DME
RWY 31
(ACFT CAT A,B,C,D)



APP	119.705	WICK APPROACH	AD ELEVATION	126
TWR	119.705	WICK TOWER	THR ELEVATION	114
ATIS	113.600	WICK INFORMATION	OBSTACLE ELEVATION	1508 AMSL (1394) (ABOVE THR)
			BEARINGS ARE MAGNETIC	

TRANSITION ALTITUDE
3000



DIRECT ARRIVAL FROM SOUTH VIA N560 or Y904
At MSA or above, at 10 DME WIK turn right to intercept the 8 DME arc WIK. Once established on the 8 DME arc :
From N560 : Descend to **not below 2600(2486)**, when crossing NDB(L) WCK QDM 007° descend **not below 1800(1686)**.
From Y904 : Descend **not below 1800(1686)**.
At lead NDB(L) WCK QDM 327° turn left to intercept the NDB(L) WCK QDM 308° inbound and continue as for Basic Procedure.

CHANGE (8/23): MSA UPDATED.